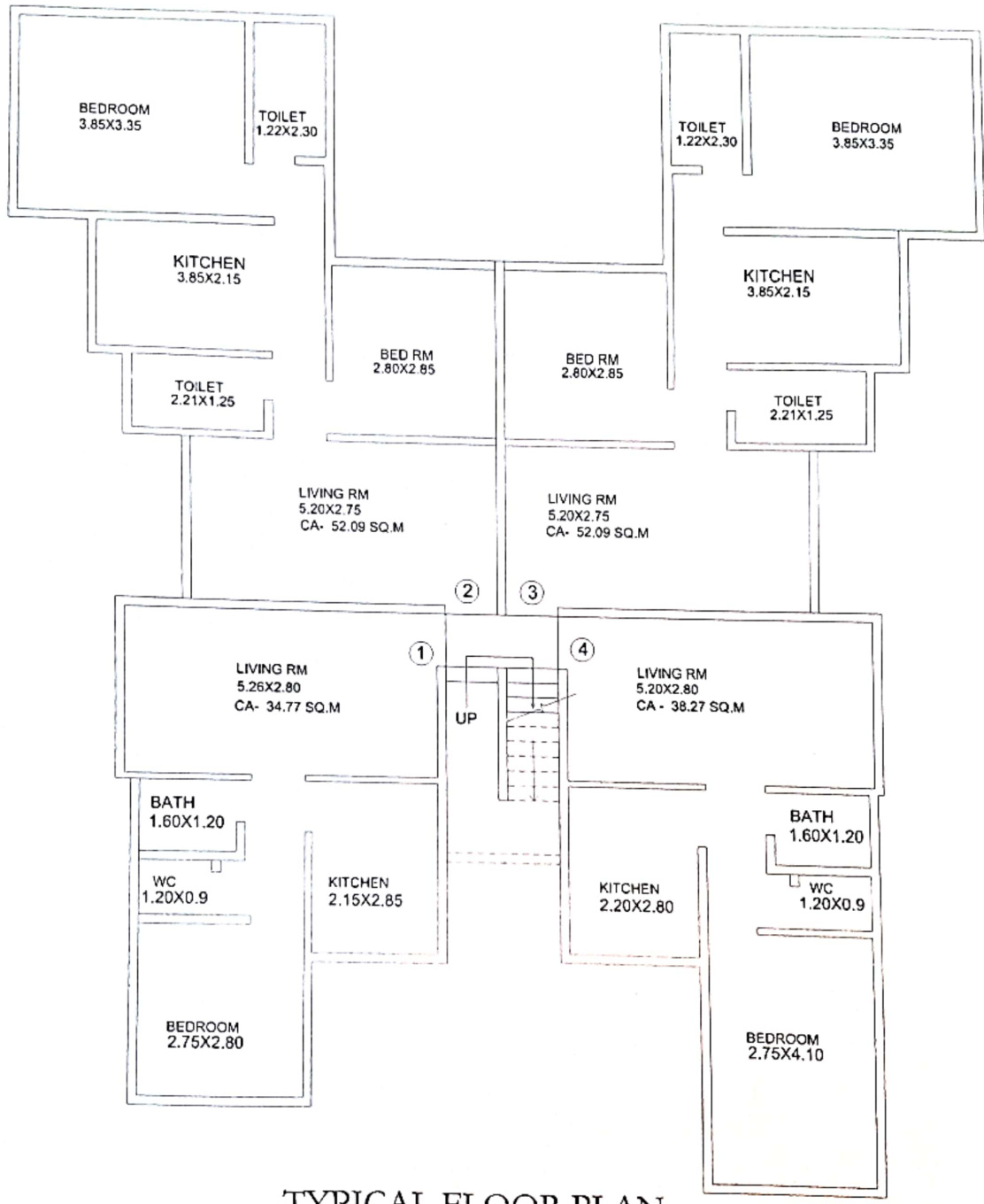
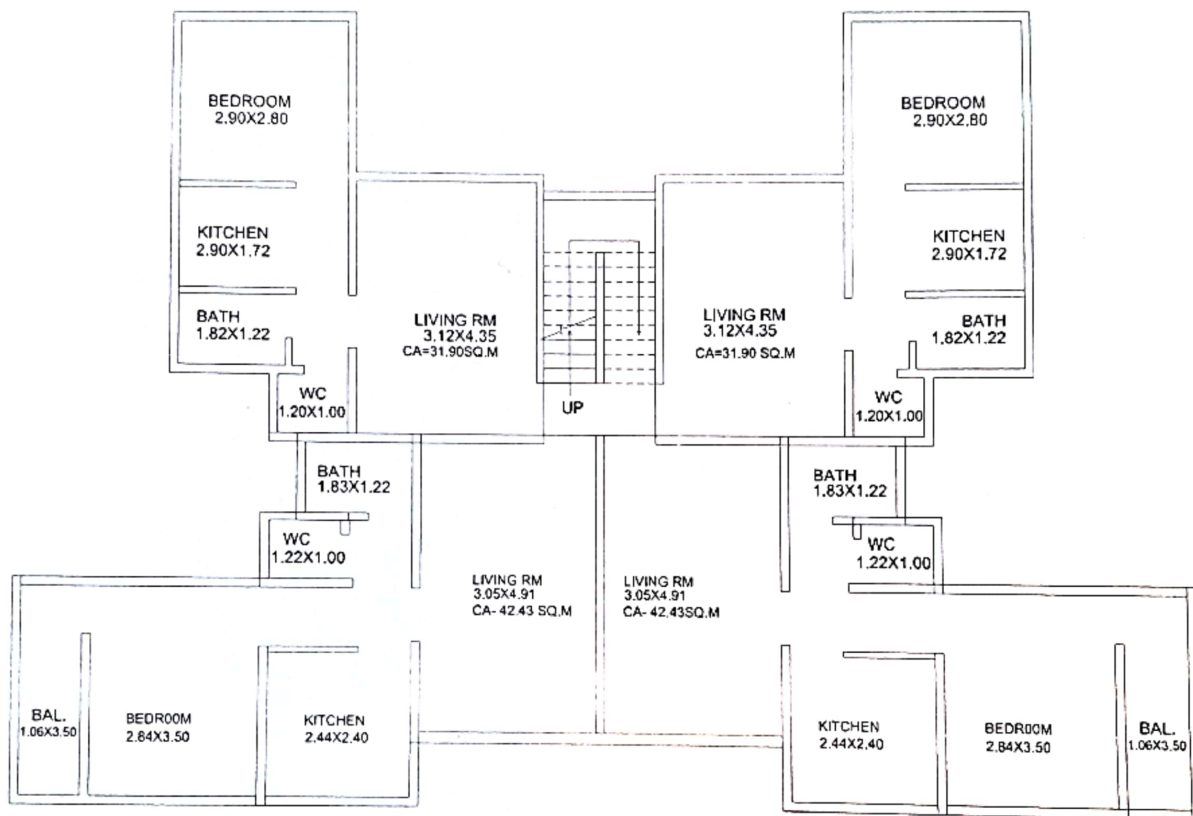


BUILDING TYPOLOGY			
TYPE		NOS.	
1RK (CON) TO 1BHK		08	
1RK		03	
2BHK		10	
1BHK		64	
TOTAL NOS. OF FLATS		85	
TOTAL NOS. OF SHOPS		10	
C6- SHOPS			
R. NO	RESIDENTIAL /SHOP	CA IN SQM.	
1	SHOP	10.01	
2	SHOP	13.58	
3	SHOP	10.11	
4	SHOP	8.70	
5	SHOP	18.60	
6	SHOP	18.85	
7	SHOP	9.28	
8	SHOP	10.38	
9	SHOP	8.74	
10	SHOP	11.46	
TOTAL NO. OF SHOPS=10			
C6- FLATS			
TYPE	NOS.	CA IN SQ.M	TERRACE AREA(SQM.)
1BHK (CON.)	08	31.90	
1BHK	01	38.71	46.25
1BHK	01	38.71	40.64
1BHK	04	42.43	
TOTAL NO. OF FLATS IN C6 = 14 NOS.			
B1			
TYPE	NOS.	CA IN SQM.	
1BHK	04	34.77	
2BHK	08	52.09	
1BHK	04	38.27	
TOTAL NO. OF FLATS IN C6 = 16NOS.			
C5			
TYPE	NOS.	CA IN SQM.	
1BHK	07	37.12	
1BHK	03	33.78	
1RK	03	25.76	
2BHK	01	49.61	
2BHK	01	47.11	
TOTAL NO. OF FLATS IN B1 = 15NOS.			
D1 & D2			
TYPE	NOS.	CA IN SQM.	
1BHK	30	36.72	
1BHK	10	37.68	
TOTAL NO. OF FLATS IN D1 & D2 = 40 NOS.			

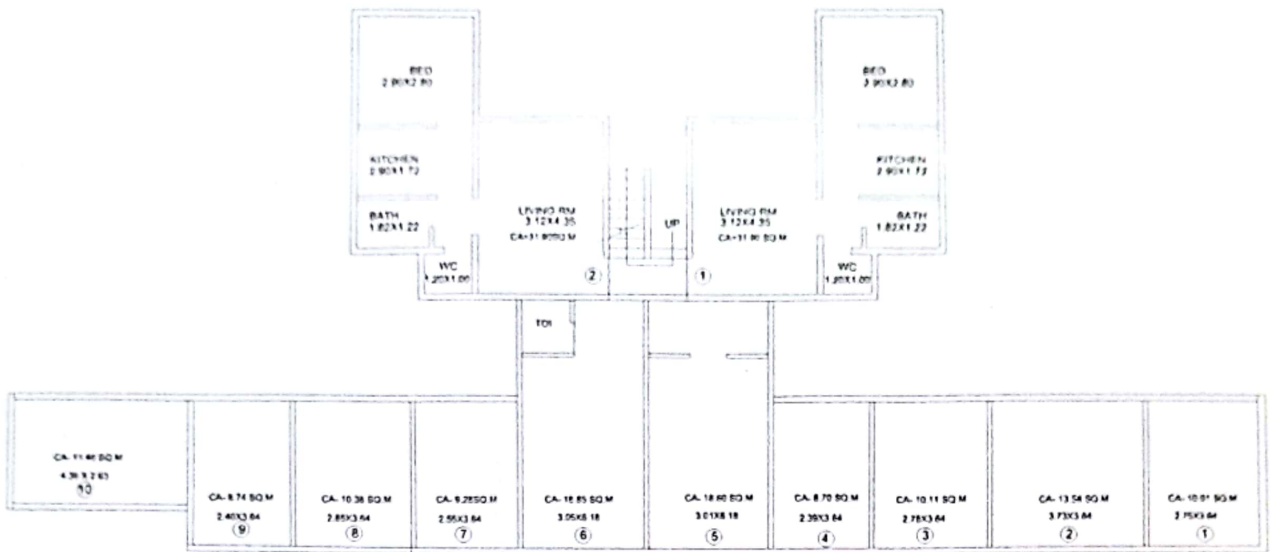


TYPICAL FLOOR PLAN  
( BUILDING NO. - B1 )

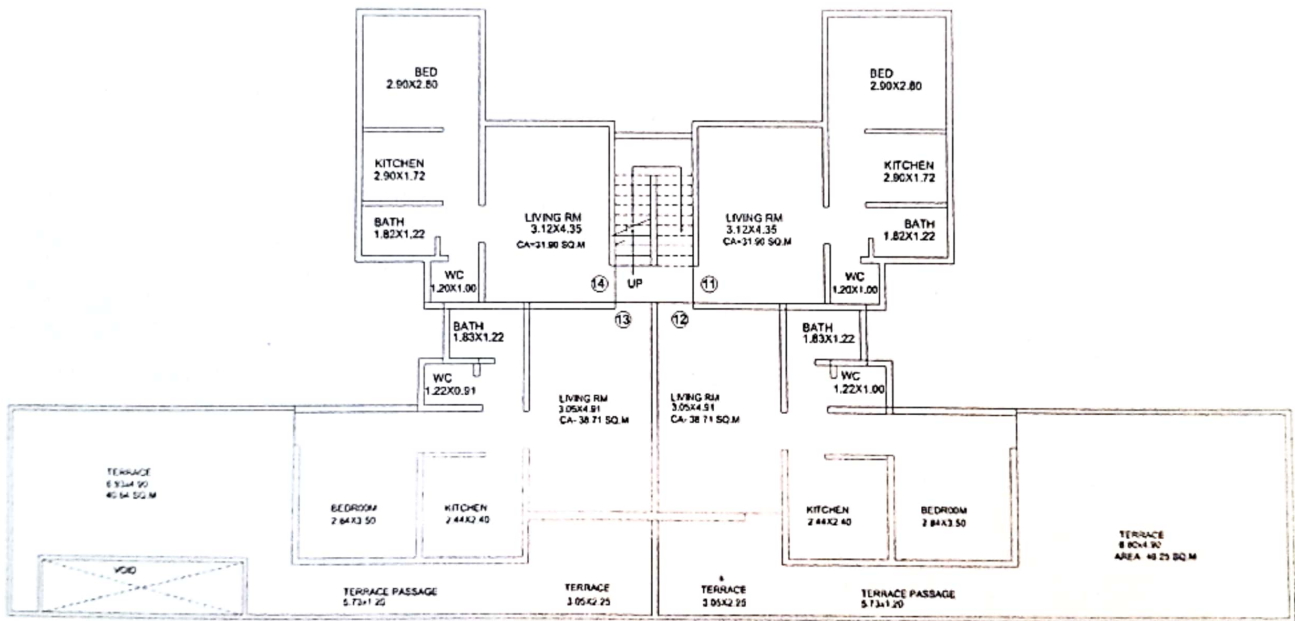


TYPICAL FLOOR PLAN

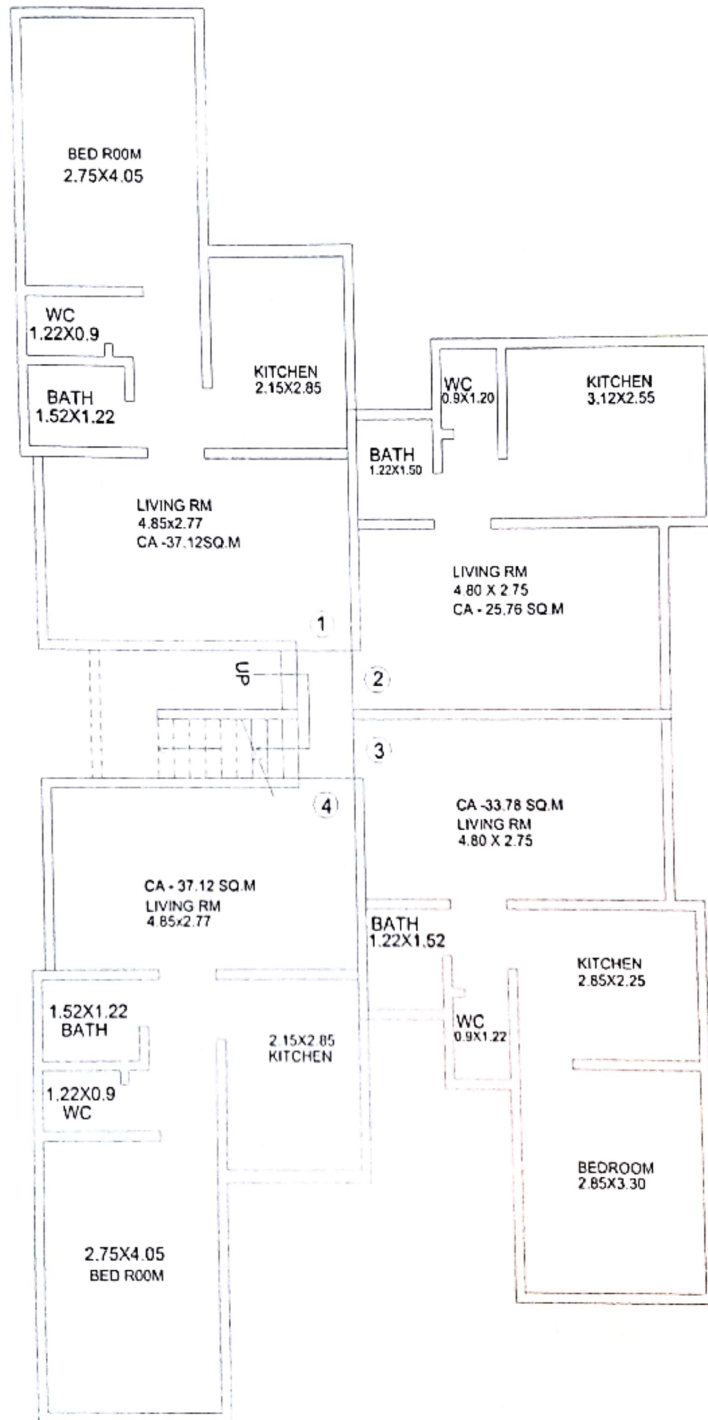
( BUILDING NO. - C6 )



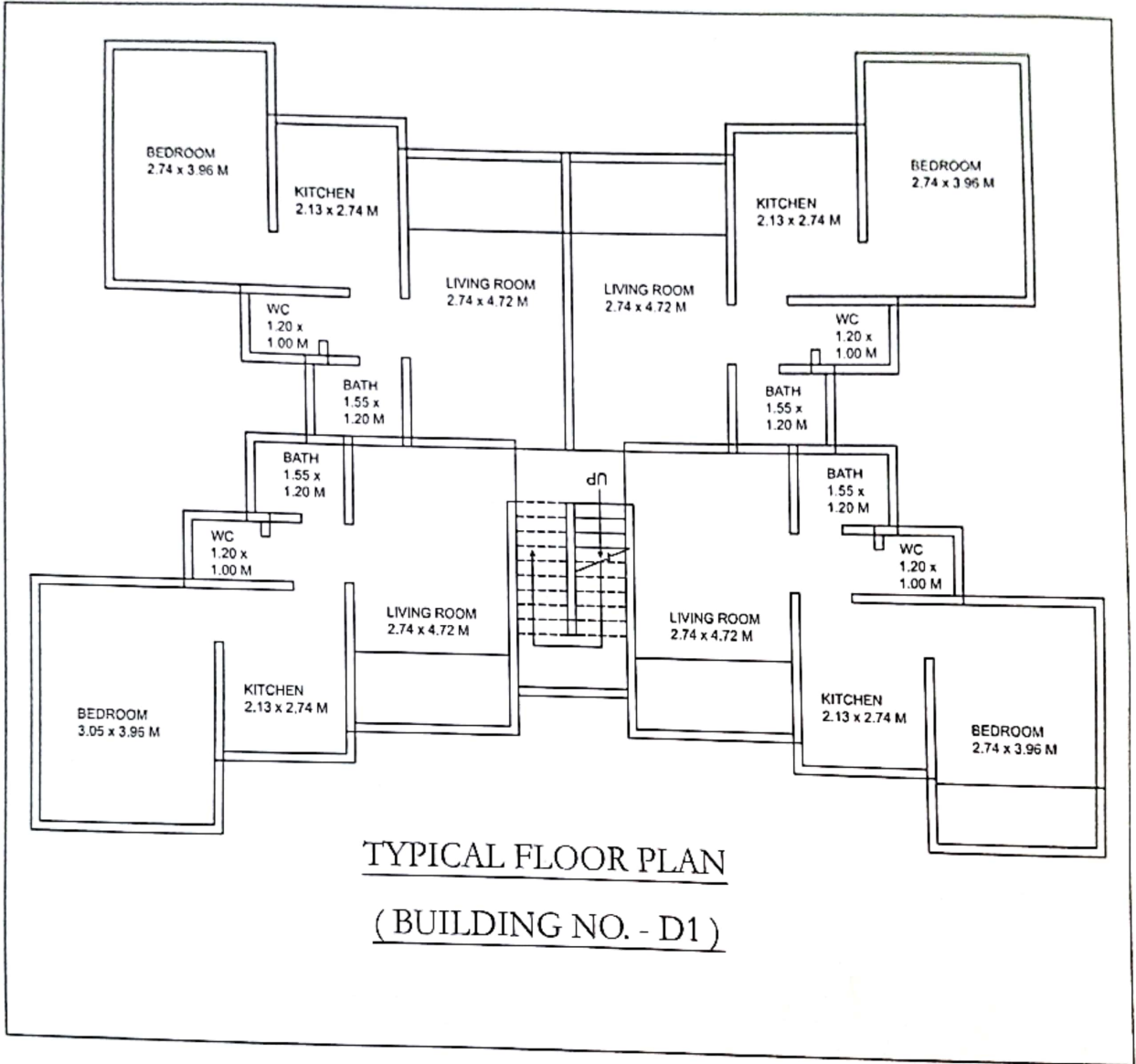
GROUND FLOOR PLAN  
(BUILDING NO. - C6)



FIRST FLOOR PLAN  
(BUILDING NO. - C6)



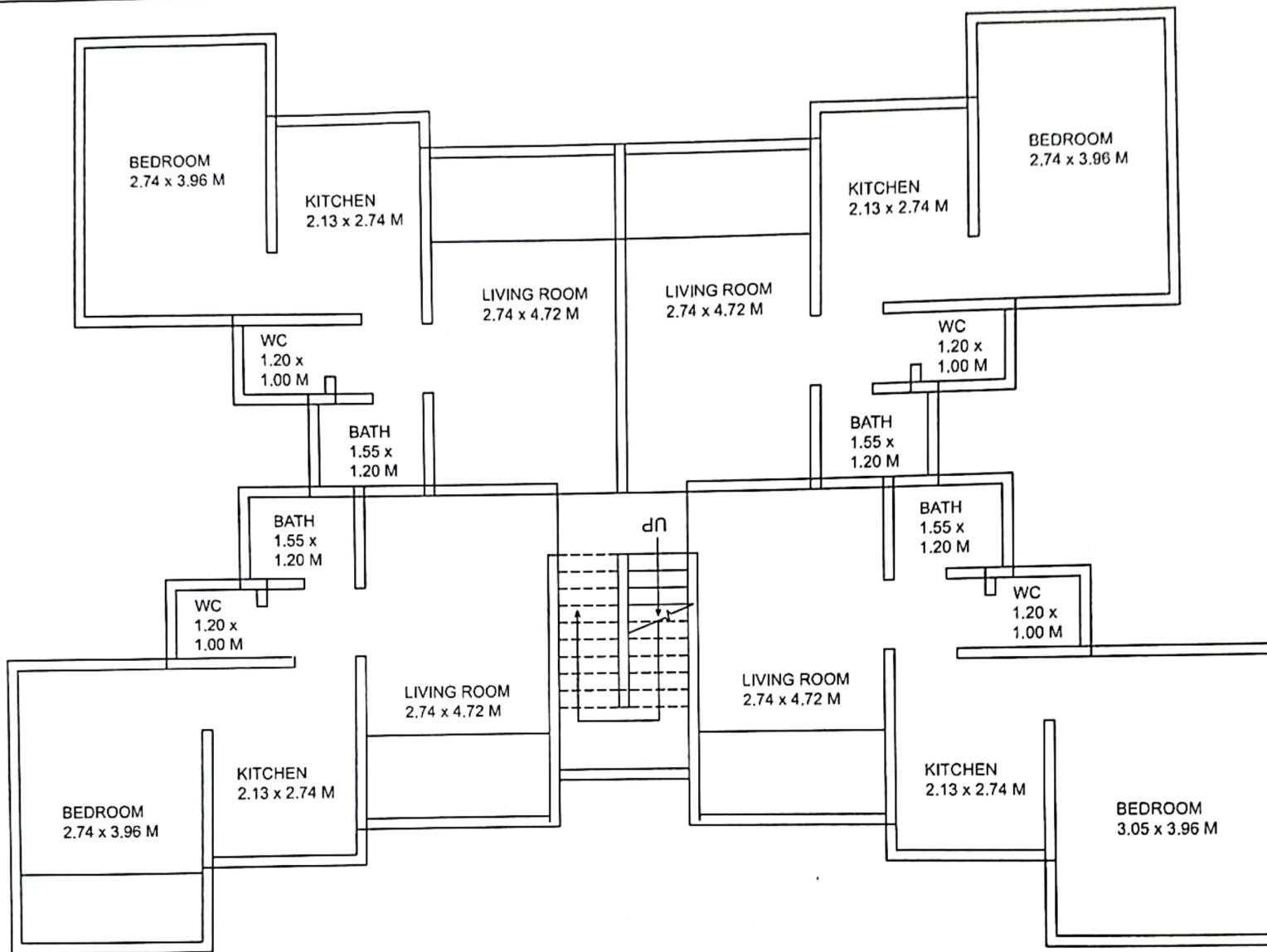
TYPICAL FLOOR PLAN  
 ( BUILDING NO. - C5 )



TYPICAL FLOOR PLAN

( BUILDING NO. - D1 )





TYPICAL FLOOR PLAN  
( BUILDING NO. - D2 )